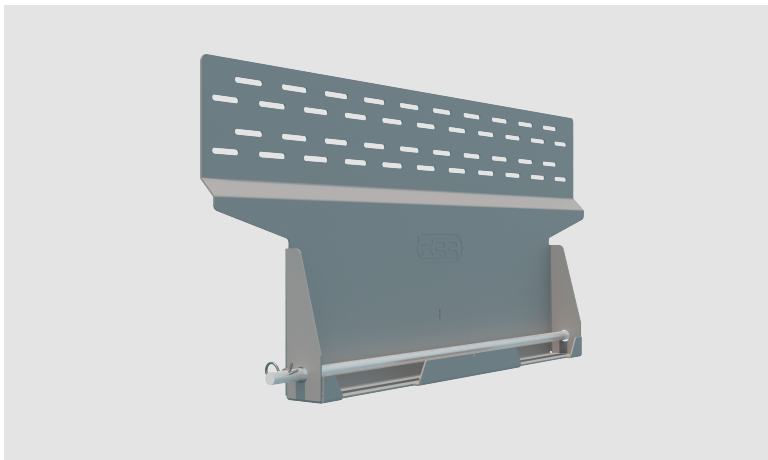


# RSS BASEPLATE

Is used if there is no gutter or it is not strong enough.



## APPLICATION

The foot plate should be used when the gutter is not strong enough to support the weight of the RSS Sloping Roof System and when the gutter is made of plastic or similar material. Even roofs without a gutter can be fitted with the RSS system thanks to the use of the RSS Baseplate. See RSS Sloping Roof manual for application and installation.

Article number: 105

Size: 110 x 50 x 10 cm

Weight: 6,0 kg

**ON A MISSION  
FOR YOUR SAFETY**